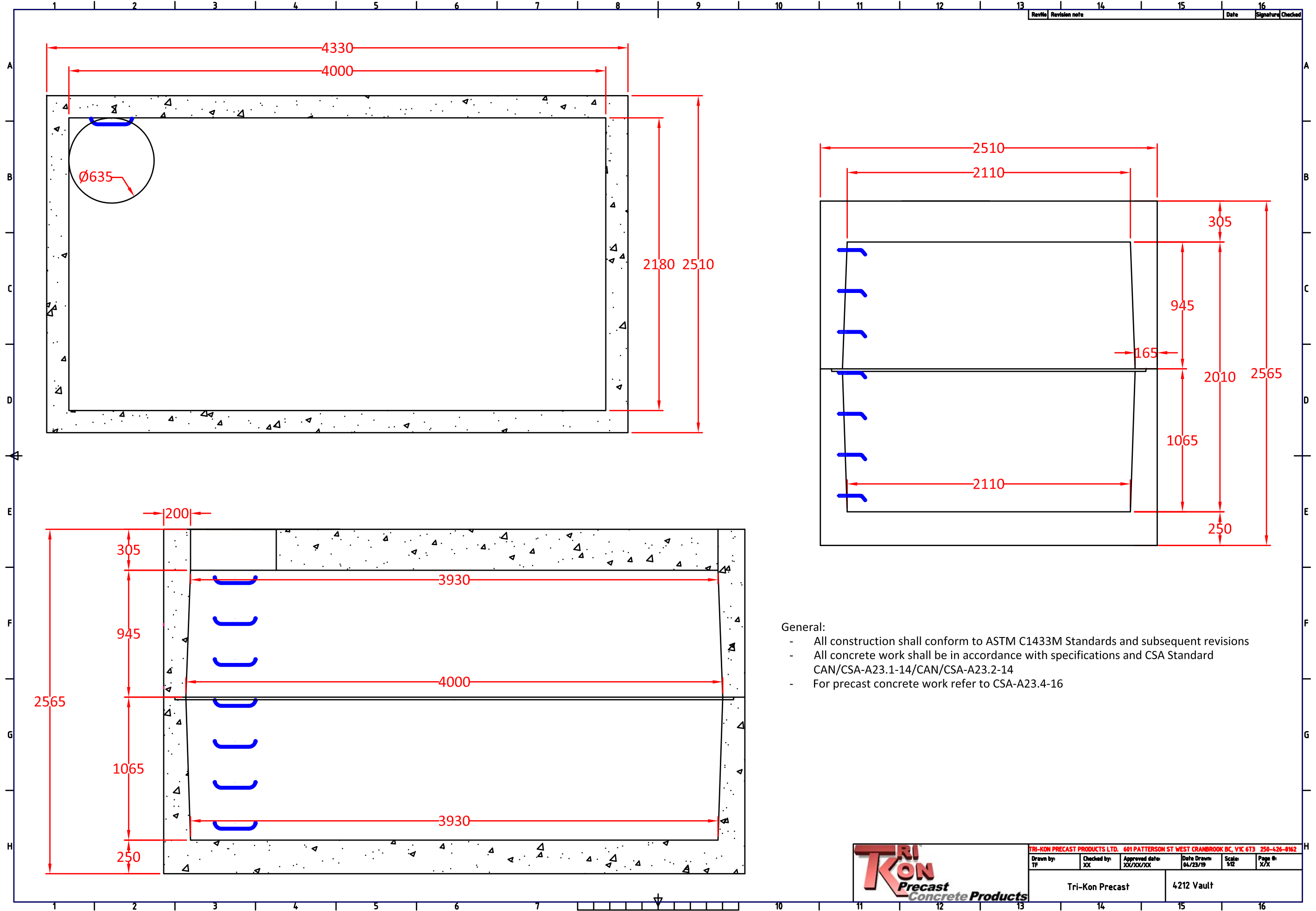


General:

- All construction shall conform to ASTM C1433M Standards and subsequent revisions
- All concrete work shall be in accordance with specifications and CSA Standard CAN/CSA-A23.1-14/CAN/CSA-A23.2-14
- For precast concrete work refer to CSA-A23.4-16



TRI-KON PRECAST PRODUCTS LTD. 601 PATTERSON ST WEST CRANBROOK BC, V1C 6T3 250-426-8162					
Drawn by: T.F.	Checked by: C.K.	Approved date: XX/XX/XX	Date Drawn: 11/05/18	Scale: XX	Page #: 1/1
Tri-Kon Precast			3152 Vault		

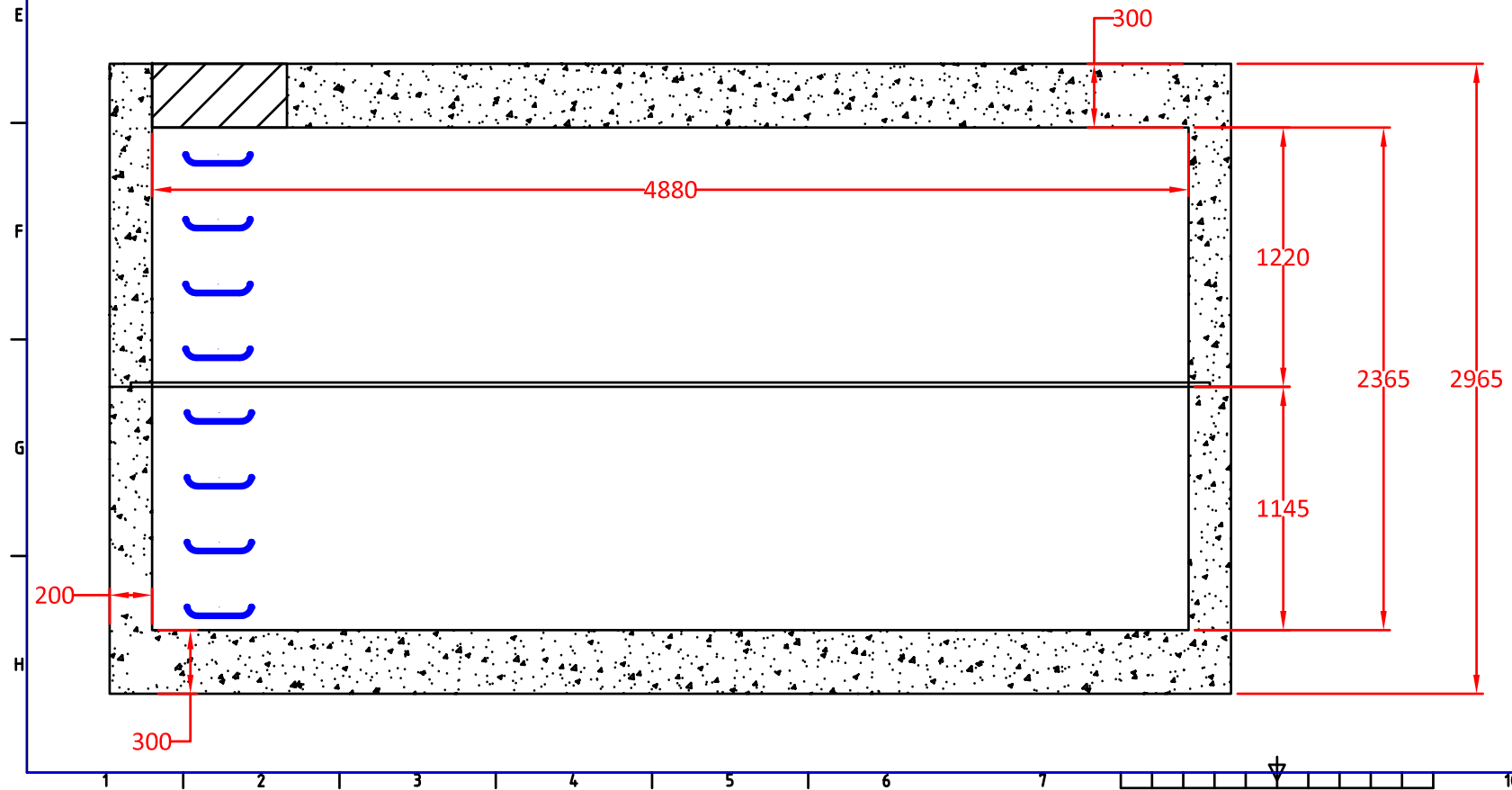
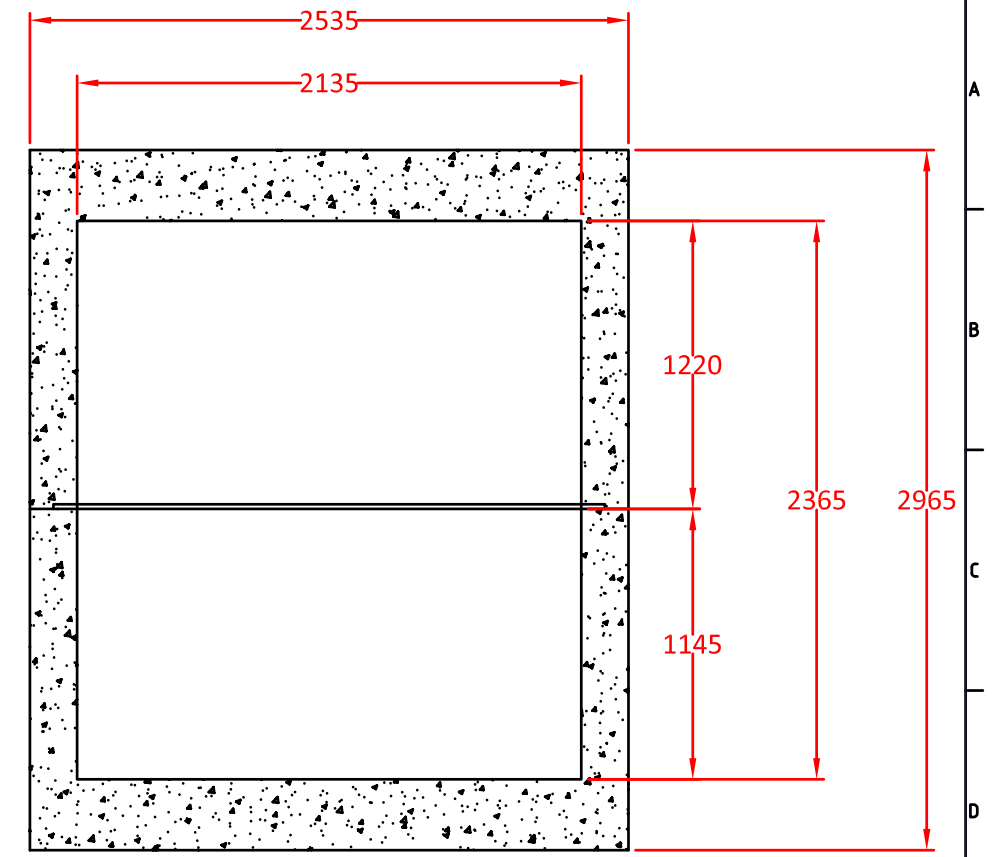
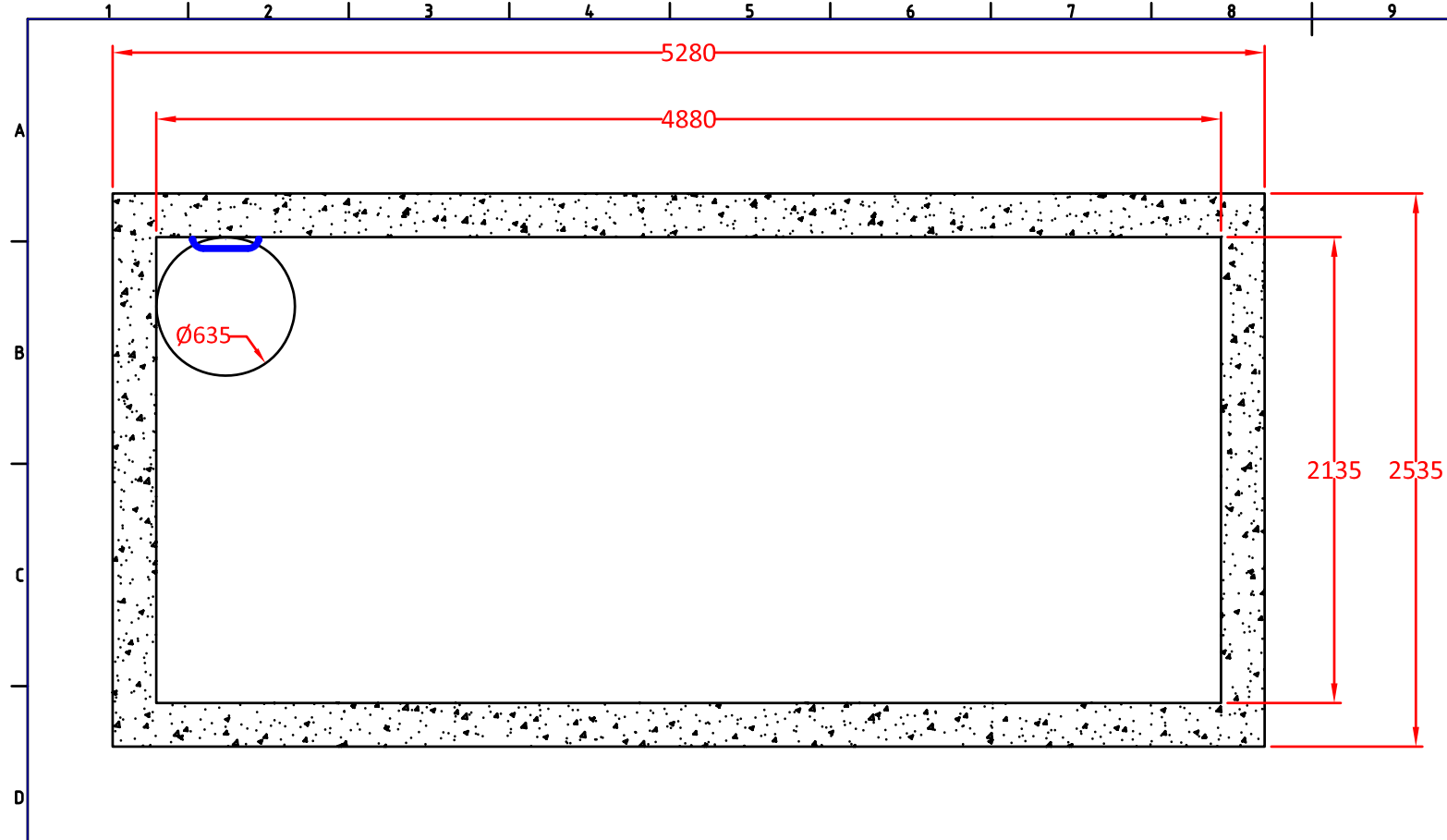


General:

- All construction shall conform to ASTM C1433M Standards and subsequent revisions
- All concrete work shall be in accordance with specifications and CSA Standard CAN/CSA-A23.1-14/CAN/CSA-A23.2-14
- For precast concrete work refer to CSA-A23.4-16



TRI-KON PRECAST PRODUCTS LTD. 601 PATTERSON ST WEST CRANBROOK BC, VIC 613 250-426-8162					
Drawn by: TF	Checked by: XX	Approved date: XX/XX/XX	Date Drawn: 04/23/19	Scale: 1/2	Page #: X/X
Tri-Kon Precast			4212 Vault		



General:

- All construction shall conform to ASTM C1433M Standards and subsequent revisions
- All concrete work shall be in accordance with specifications and CSA Standard CAN/CSA-A23.1-14/CAN/CSA-A23.2-14
- For precast concrete work refer to CSA-A23.4-16



TRI-KON PRECAST PRODUCTS LTD. 601 PATTERSON ST WEST CRANBROOK BC, VIC 613 250-426-8162					
Drawn by: TF	Checked by: OK	Approved date: XX/XX/XX	Date Drawn: XX/XX/XX	Scale: XX	Page #: X/X
Tri-Kon Precast			5212 Vault		