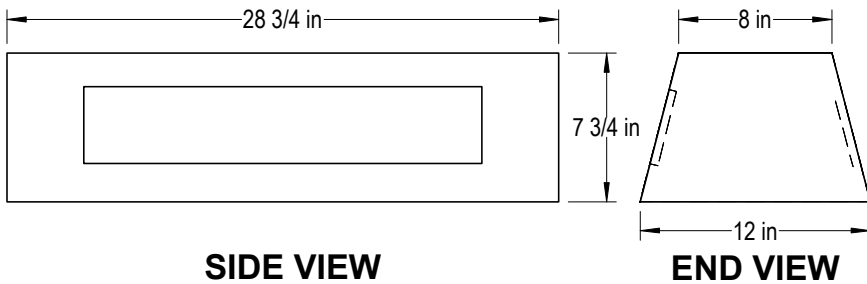
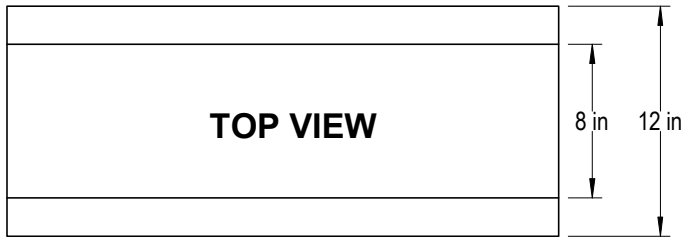


LARGE SUPPORT

APPROXIMATE WEIGHT: 180 LBS / 82 KG



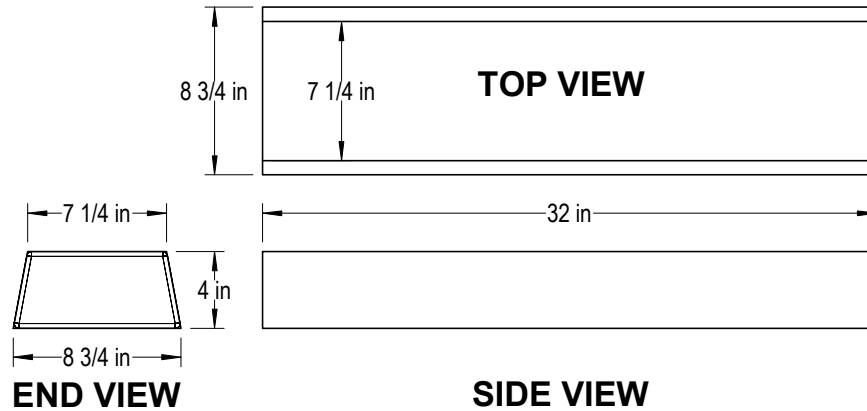
SIDE VIEW

END VIEW

ELEVATION: SCALE 1" = 10"

SMALL SUPPORT

APPROXIMATE WEIGHT: 86 LBS / 40 KG



END VIEW

SIDE VIEW

ELEVATION: SCALE 1" = 10"



PROPANE TANK SUPPORTS

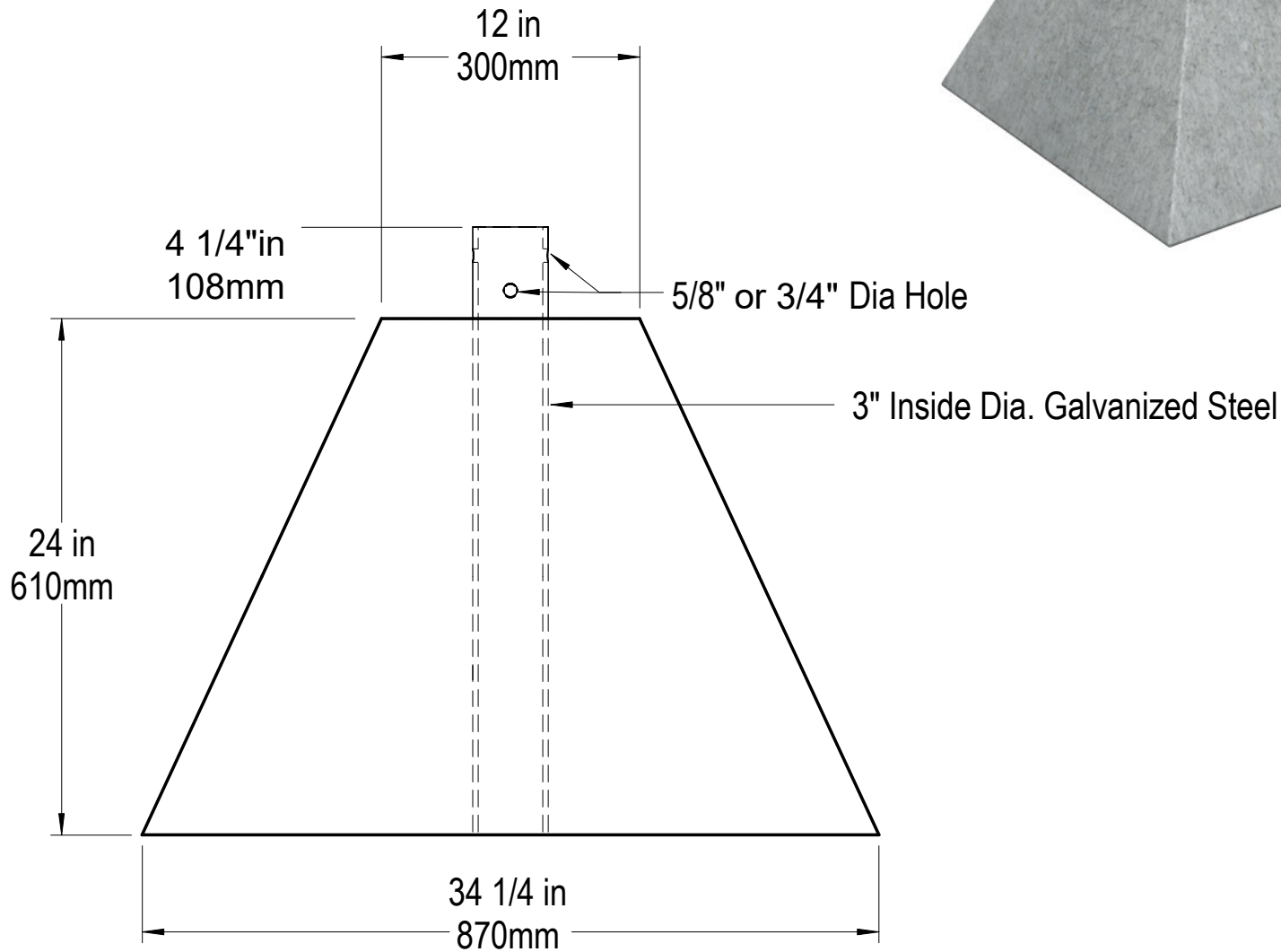
AS NOTED

FEB 19/2009

DRAWN: RAB

601 Patterson West
Cranbrook, B.C.
PO BOX 491 V1C 4J6
Phone 250-426-8162
Fax 250-489-4013
email: info@trikonprecast.com
www.trikonprecast.com

TRIKON
Precast
Concrete Products



ELEVATION: SCALE 1" = 8"

APPROXIMATE WEIGHT: 1150 LBS / 520 KG

SIGN BASE

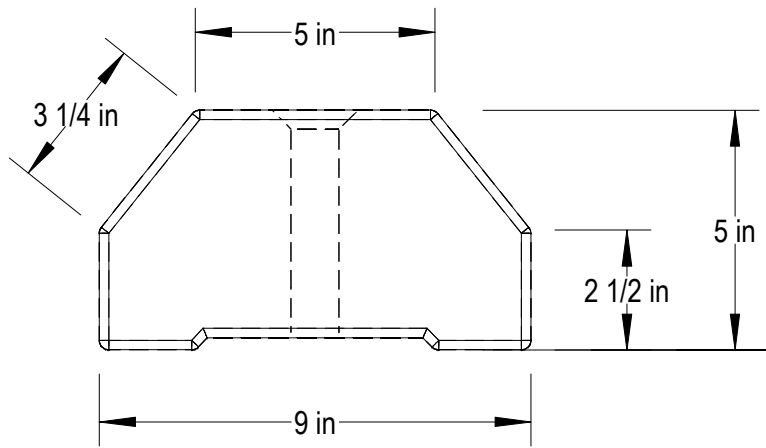
NO SCALE

FEB 19/2009

DRAWN: RAB

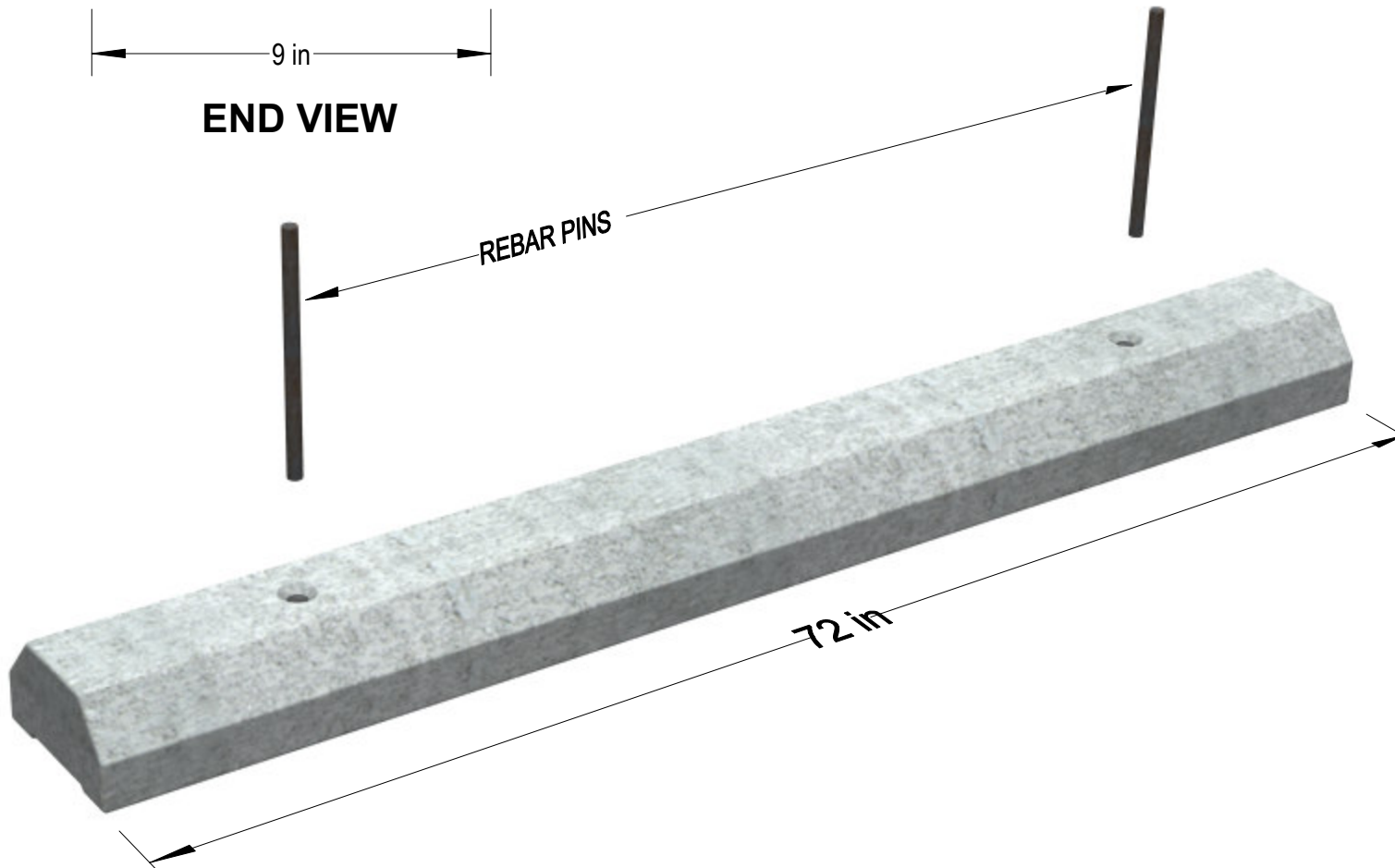
601 Patterson West
 Cranbrook, B.C.
 PO BOX 491 VIC 4J6
 Phone 250-426-8162
 Fax 250-489-4013
 email: info@trikonprecast.com
 www.trikonprecast.com





END VIEW

APPROXIMATE WEIGHT: 230 LBS / 104KG



REBAR PINS

72 in

6 FT PARKING CURB

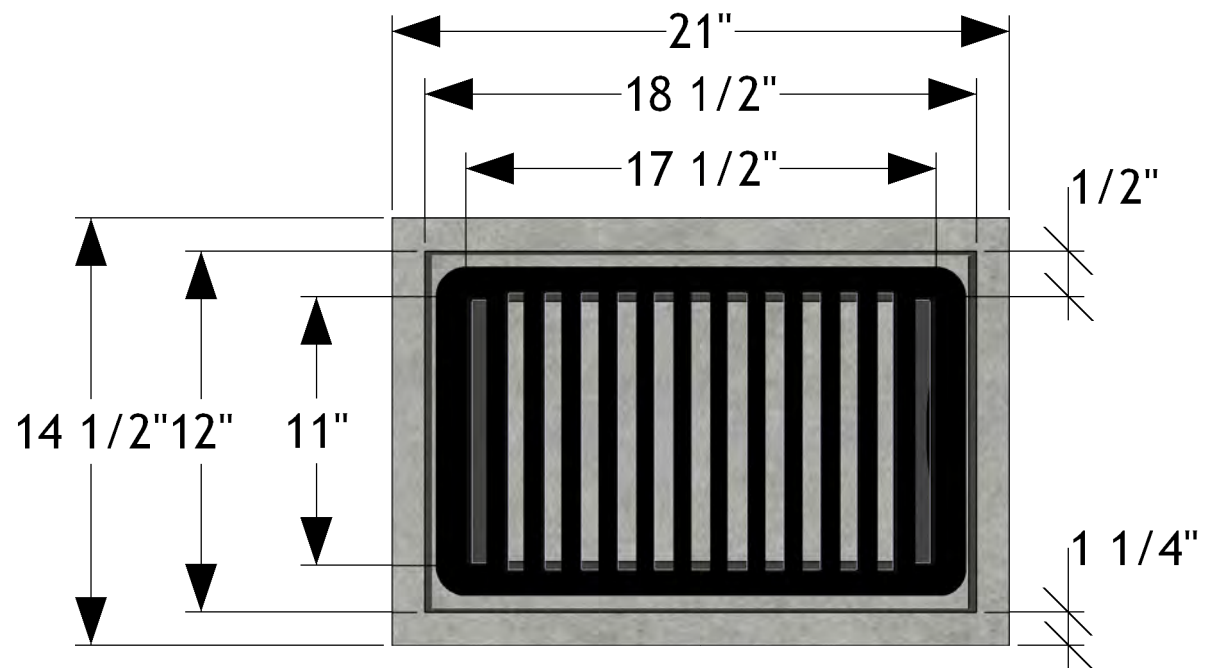
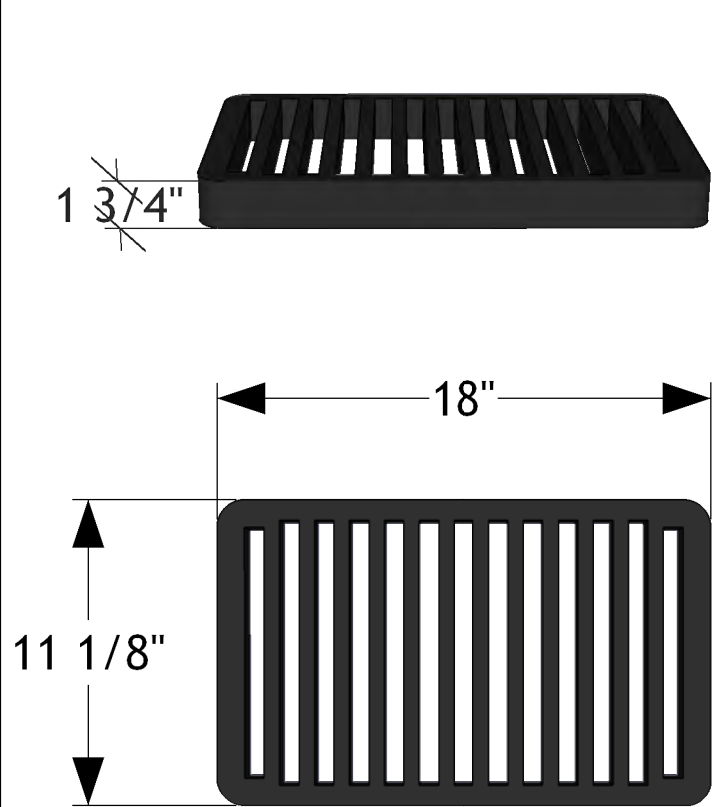
NOT TO SCALE

FEB 18 / 2009

DRAWN: RAB

601 Patterson West
 Cranbrook, B.C.
 PO BOX 491 V1C 4J6
 Phone 250-426-8162
 Fax 250-489-4013
 email: info@trikonprecast.com
 www.trikonprecast.com





NOTES:

Floor Drain:

I.D: 17 1/2" x 11" x 14"

O.D: 21" x 14 1/2" x 15 3/4"

200 lbs.

Grate:

11 1/8" x 18"

27 lbs.

