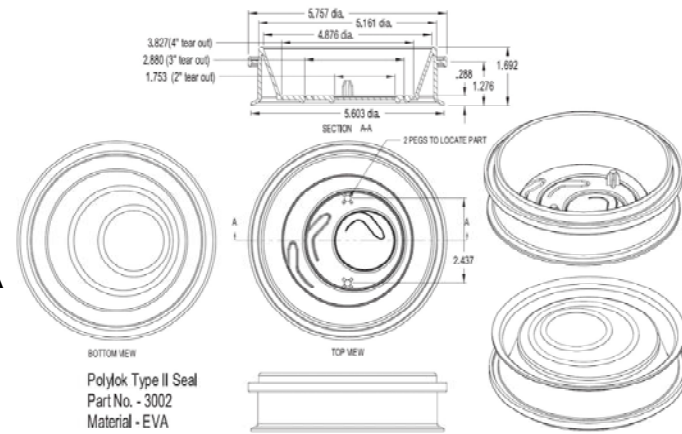


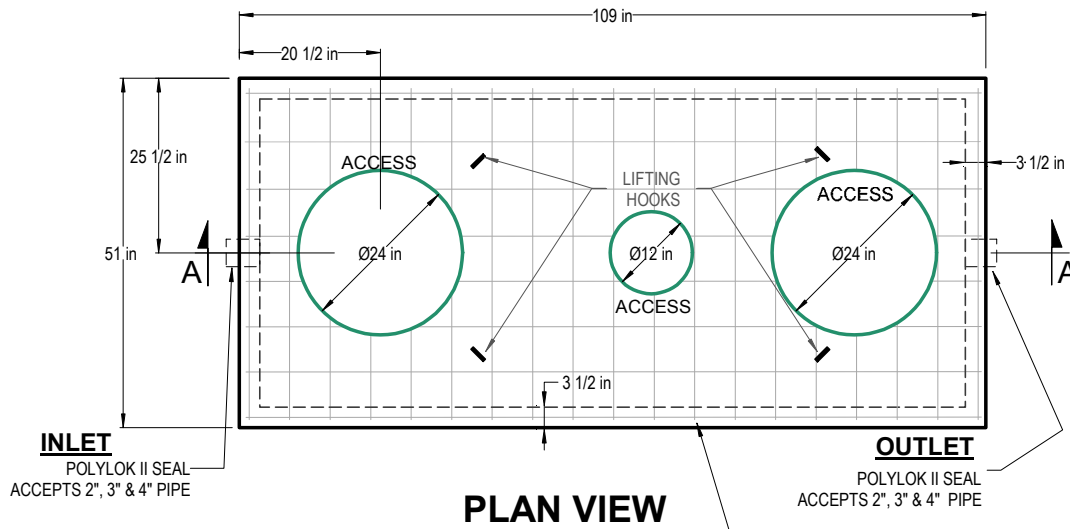
### THE POLY II HIGH PRESSURE PIPE SEAL



Polylok Type II Seal  
Part No. - 3002  
Material - EVA

#### DIRECTIONS:

1. Remove the correct size tear-out on the seal. (TEAR OUT- DO NOT CUT OUT!)
2. Chamfer the OD of the pipe, removing all burrs, sharp or jagged edges.
3. Apply a minimal amount of grease to the chamfered edge of the pipe.
4. Slide the pipe into the seal.
5. Remember to always backfill properly around and underneath the pipe.



**PLAN VIEW**

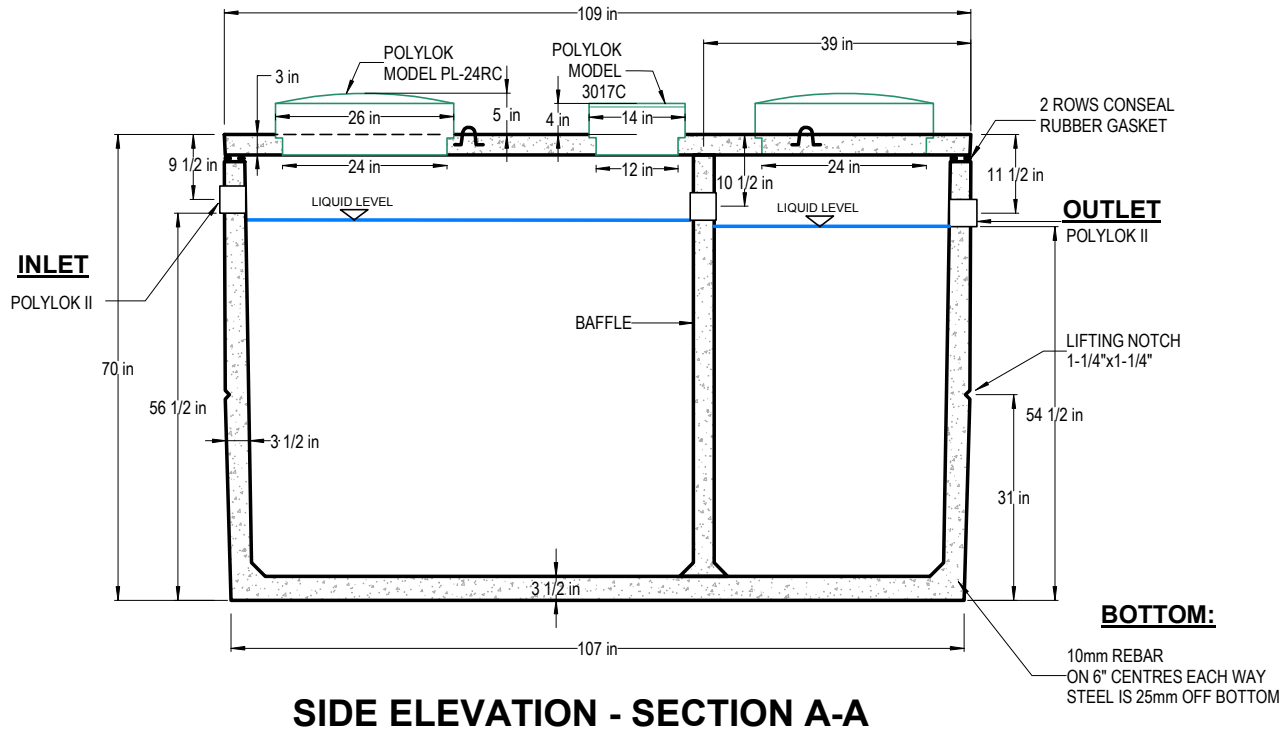
**INLET**  
POLYLOK II SEAL  
ACCEPTS 2", 3" & 4" PIPE

**OUTLET**  
POLYLOK II SEAL  
ACCEPTS 2", 3" & 4" PIPE

**LID:**  
10mm REBAR  
ON 6" CENTRES EACH WAY  
STEEL IS 25mm OFF BOTTOM

#### NOTES:

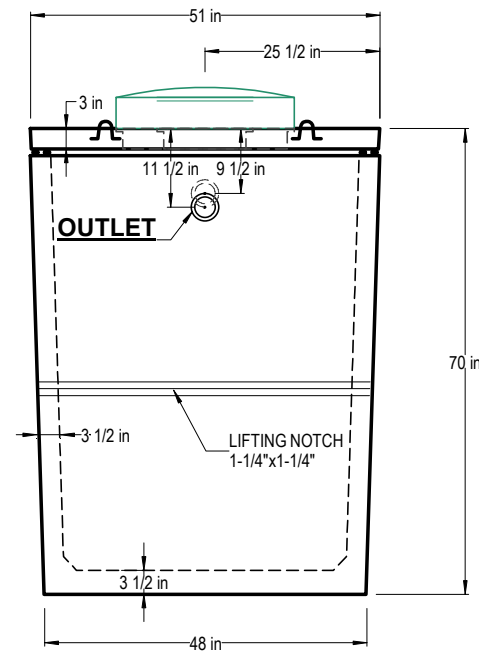
1. CONCRETE TO BE MINIMUM 32 MPA 5-8% AIR ENTRAINMENT
2. TANK BODY: STRUCTURAL FIBRE BOND ADDED TO CONCRETE
3. WEIGHTS: LID ONLY 1275 lbs/578 kg, TANK BODY 6725 lbs/3050 kg. TOTAL WEIGHT 8000 lbs/3628 kg



**SIDE ELEVATION - SECTION A-A**

#### BOTTOM:

10mm REBAR  
ON 6" CENTRES EACH WAY  
STEEL IS 25mm OFF BOTTOM



**END ELEVATION**

**800 GALLON SEPTIC TANK**

NOT TO SCALE

MARCH 09/2011

DRAWN: R.A.B

601 Patterson West  
Cranbrook, B.C.  
PO BOX 491 V1C 4J6  
Phone 250-426-8162  
Fax 250-489-4013  
email: info@trikonprecast.com  
www.trikonprecast.com

