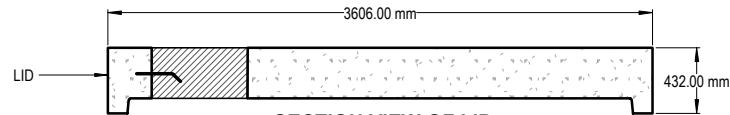
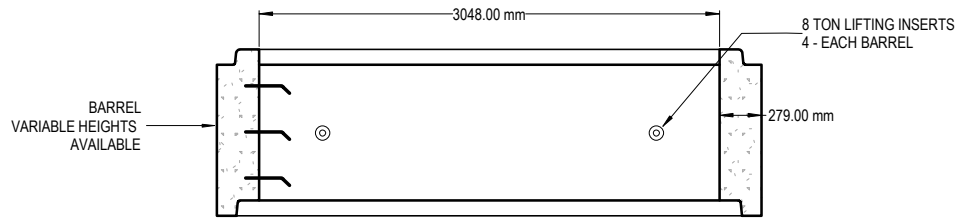


**PLAN VIEW OF LID**

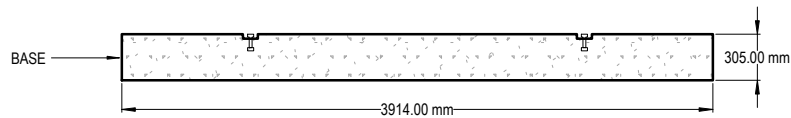
NOTES:  
 3050 MANHOLE BARREL MANUFACTURED TO ASTM C478  
 BARREL SUPPLIED WITH ALUMINUM LADDER RUNGS @ 305mm o/c  
 MINIMUM CONCRETE STRENGTH @ 7 DAYS: 35MPA  
 BARREL WEIGHT APPROX: 14,300 LBS (6500KG) / VERTICAL METRE  
 BASE WEIGHT APPROX: 18,000 LBS (8165KG)  
 LID WEIGHT APPROX: 16,700 LBS (7560KG)



**SECTION VIEW OF LID**



**SECTION VIEW OF BARREL /BASE**



**3050 MANHOLE BARREL**

SCALE 1:50

MARCH 23/2011

DRAWN: RAB

601 Patterson West  
 Cranbrook, B.C.  
 PO BOX 491 V1C 4J6  
 Phone 250-426-8162  
 Fax 250-489-4013  
 email: info@trikonprecast.com  
 www.trikonprecast.com

